



S I G N A T U R E

The banner features a repeating pattern of light blue floral motifs on a dark blue background. A gold-colored decorative element, resembling a stylized 'S' or a scroll, is centered above the word "SIGNATURE".

The *Signature* Suite From Chubb

Risk management services to suit your lifestyle



The nature and amount of assets you insure with Chubb place you in a select group of highly valued customers, which Chubb respectfully refers to as “Signature.”

WHEN YOU TRAVEL...

- **Signature PassportSM Travel Coverages and Services.** If you travel extensively for business or pleasure, Chubb's *Signature* Passport policy offers you and your family members unique, worldwide coverages and services that far surpass offerings from standard credit card companies. For a covered trip, *Signature* Passport includes \$250,000 per insured person for emergency medical transportation expenses; \$50,000 per insured person for healthcare expenses not typically covered outside the U.S. (available in most states); coverage for baggage delay and trip delay; and emergency travel assistance provided by MEDEX[®] Global Group, Inc.
- **Assistance With Lost Travel Documents.** In addition to the complimentary identity resolution services and disaster recovery assistance offered to all Chubb homeowner and automobile policyholders from Identity Theft 911[®], *Signature* customers are also entitled to receive complimentary identity travel assistance when documents such as passports, visas, drivers' licenses or credit cards are lost, misplaced or stolen. This service offers peace of mind if you are concerned that your identity might be compromised if something happens to your personal documents while you are traveling.
- **Travel Security Assessment.** Chubb's exclusive relationship with Risk Control Strategies, Inc. (RCS), a leading U.S. threat management and consulting firm, provides you with a complimentary, over-the-phone travel security assessment designed to help protect you and your family during travel. RCS contemplates your public profile, the countries in which you travel, and the businesses with which you typically engage during travel. RCS then offers customized recommendations to improve security and ensure smooth travel.

TO HELP WITH YOUR EMPLOYEES...

- **Employment Best Practices Web Site.** Chubb partners with The McCalmon Group, Inc., attorneys specializing in employment practices law and family protection, to provide complimentary and up-to-date information that can help protect your household from litigation, violence, theft, fraud and other losses associated with personal or family office staff.



Introducing Service...

SIGNATURE STYLE

As a *Signature* customer, you have exclusive access to the ***Signature Suite*** of services. Combining complimentary and discounted service offerings with innovative products, the *Signature* Suite was crafted specifically to address sophisticated asset protection needs for customers like you. Following are details about the services currently available and how to start taking advantage of them today.

TO HELP WITH YOUR EMPLOYEES *(continued)* ...

- **Employee and Contractor Background Investigations.** Through our relationship with Risk Control Strategies, Inc., Chubb can provide background investigations on your existing or prospective full-time and/or live-in employees. Such investigations may help you make better hiring choices and/or evaluate existing staff, reducing the chance of employee theft, kidnapping and other risks. Eligible positions include: au pairs, cooks, drivers, housekeepers, nannies, family office staff, gardeners, yacht captains and first mates. Discounted background investigations for contractors are also available.
- **Referrals to Personal Staff Management Services.** Chubb offers complimentary referrals to a company with a wealth of experience in helping individuals hire, retain and manage personal staff. You can opt to receive a phone consultation, which may help reduce exposures to employment liability, theft or other employee-related problems.

FOR YOUR SECURITY AND SAFETY...

- **Security Consultations and Lifestyle Vulnerability Diagnostic.** Chubb has teamed up with Risk Control Strategies, Inc. (RCS) to offer critical advice to minimize risk to your personal safety. RCS provides complimentary, unlimited telephone consultations for all security-related needs and an in-depth lifestyle vulnerability diagnostic to help identify potentially dangerous threats. RCS will review your residential security and computer, phone and travel security protocols as well as provide guidance on any concerns.
- **Family Protection Web Site.** To help ensure the safety of you and your family, Chubb provides the latest online information about protecting your household. Drawing upon the expertise of industry leaders, our complimentary, monthly bulletin features topics such as protecting your children from predators, choosing employees wisely, and how to protect your family from violence.
- **Masterpiece® HomeScanSM.** This complimentary, consultative service uses cutting-edge, infrared camera technology to help identify moisture problems and potential fire hazards in your home. With this technology, Chubb helps protect the personal safety of you and your household members, which is our highest priority. *Masterpiece* HomeScanSM can also help reduce the chance of potentially devastating losses to your home and personal possessions.

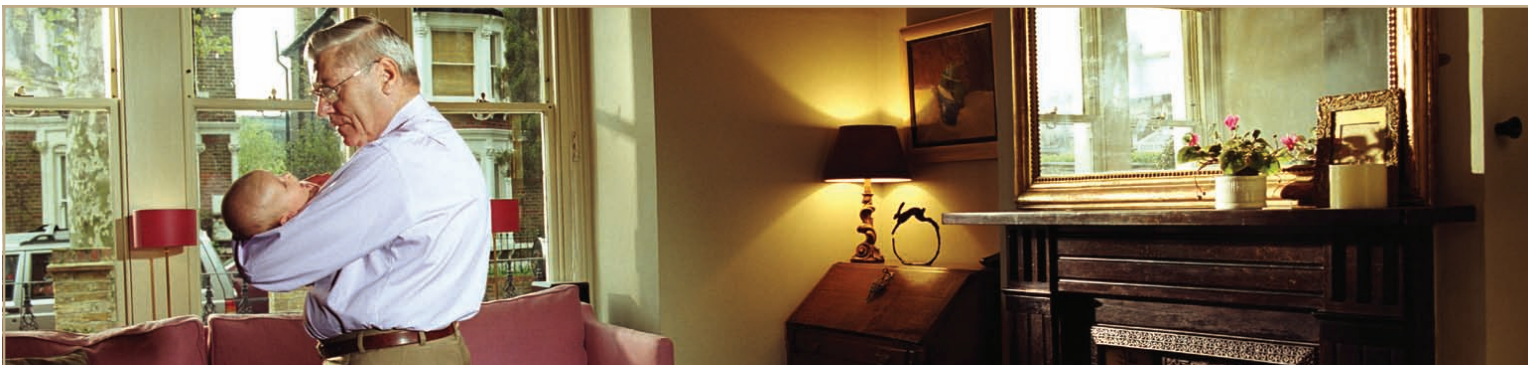
FOR YOUR VALUABLE COLLECTION...

- **Collectify™ Collection Management Software.** This leading collection management tool facilitates the documentation of your collectibles and can help manage any collection, including art, jewelry, wine or antiques for curatorial, accounting, estate, philanthropic or insurance claim purposes. Chubb is pleased to offer you a complimentary copy of Collectify software and online assistance to help you get started.
- **Masterpiece® Collector Services.** Chubb's in-house collector specialists are dedicated to offering complimentary, custom advice to help protect your collection. Services include on- and off-premise surveys to provide guidance on proper storage and display conditions, assessment of loss potential, and advice about general preservation. Chubb also offers a review of your valuable articles schedule, in conjunction with a brief analysis of current market trends, to help you determine if the values listed on your policy reflect current market values of comparable works of art.
- **Masterpiece® Protection Network.** Through this database of 1,600 service providers, Chubb offers referrals to independent experts in specialties such as conservation and restoration of valuable items, art shipping and storage, collection management, auction, appraisal and more. Some of these service providers offer discounts to Chubb customers.

ACCESS THE SIGNATURE SUITE

For easy access to the full suite of services currently available to you, visit www.chubb.com/personal. Go to "My Policies" and log on, then click on "*Signature*." If you have never accessed the site before, you will need a copy of your recent Chubb invoice or current policy to register. To contact the *Signature* Suite directly or for assistance with registration or online offerings, call the *Signature* Customer Care Team at 1.866.324.8222 or +1.908.572.3895 (international).

The *Signature* Suite may vary over time. Please check the Web site periodically for new features and services, and contact your agent or broker to determine if you qualify for our free or deeply discounted offerings.



The Chubb Tradition

As a leading global insurer of fine homes and possessions, Chubb has been known for innovation, quality protection and unparalleled claim service since 1882. The member insurers of the Chubb Group of Insurance Companies earn the highest rating for financial strength from A.M. Best Company, attesting to the solid financial stability that backs every Chubb policy.

Chubb refers to the insurers of the Chubb Group of Insurance Companies underwriting coverage: Great Northern Insurance Company, Vigilant Insurance Company, Federal Insurance Company, Chubb Custom Insurance Company, Chubb National Insurance Company, Chubb Indemnity Insurance Company, Chubb Insurance Company of New Jersey, Pacific Indemnity Company, Texas Pacific Indemnity Company, Northwestern Pacific Indemnity Company and Chubb Lloyds Insurance Company of Texas. Not all insurers do business in all jurisdictions. Chubb Personal Insurance (CPI) is the personal lines property and casualty strategic business unit of Chubb & Son, a division of Federal Insurance Company, as manager and/or agent for the insurers of the Chubb Group of Insurance Companies.

The services described in the literature are not available in all jurisdictions. Actual coverage is subject to the language of the policies as issued.

Evaluations, reports and recommendations are made solely to assist Chubb in underwriting and loss control. Neither Chubb nor its employees or agents shall be liable to any party for the use of any information or statements made or contained in any evaluation, report or recommendation.



P.O. Box 1615, Warren, NJ 07061-1615
www.chubb.com/personal

Form 02-01-0431 (Rev. 7/09)