

# Chubb Resilience Services

## Protecting property from dynamic climate risk

Climate-related events are becoming more frequent and intense, providing property-owners with increasing challenges and difficult choices.

Taking proactive measures to enhance property resilience is essential. Chubb Resilience Services helps businesses, communities and homeowners reduce the vulnerability of their property to climate-related events.

These efforts can lead to tangible savings while protecting long-term investments, offering reassurance in the face of an ever-changing climate.

Whatever the future holds, your property should be ready for it.



## Property resilience isn't a future concern; it is today's priority

Climate-related events are becoming more frequent and more intense, giving companies ever increasing challenges and harder decisions. Whether planning for, or recovering from physical damage to properties and facilities, or dealing with increased insurance costs and managing stakeholder pressure, climate risk is a pressing reality.

### Physical Damage

Property damage to homes, business and critical infrastructure.



### Escalating Costs

Increased energy, operating and insurance costs.



### Disruptions

Disruption of critical infrastructure and supply chains impacting availability and costs of materials.



### Evolving Futures

Changing landscapes, regulatory pressures and an increased need for resilient measures.



## Industry-leading expertise

By combining vast risk management expertise with industry-leading climate risk modeling and data, we can provide realistic predictions and advise ways of mitigating them. We are your strategic partner, supporting you in critical decision-making daily. We can be your one-stop shop to streamline risk management and mitigation strategies.

### Promote a proactive approach to property resilience:

by anticipating and addressing climate risks before they impact your property and business

### Providing a complete view of risk:

by combining our data with current and future state models and detailed engineering insights to deliver actionable insights

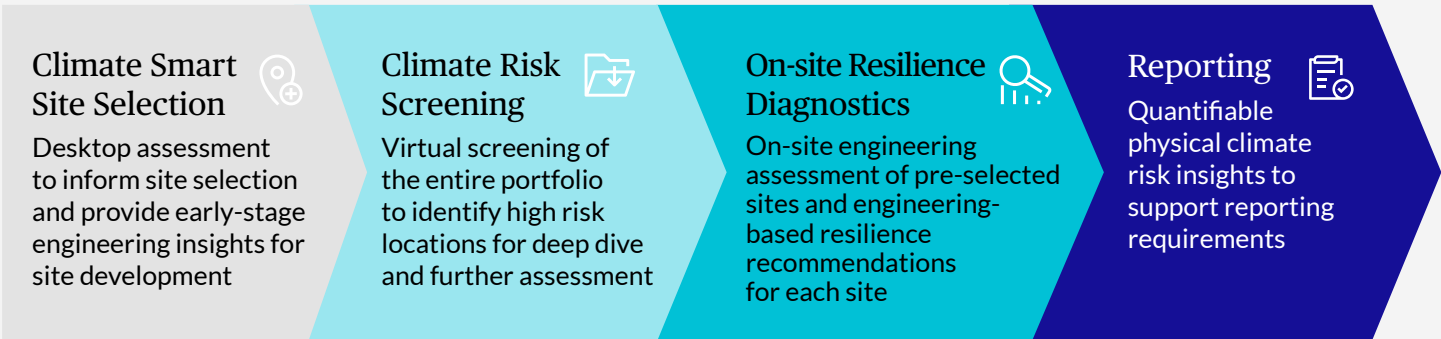
### Linking resilience outcomes to your property programs:

to create a clear and tangible benefit

# Chubb's Resilience Services

## Our Solutions

Our 3 levels of service are designed to meet our client's needs today and plan for the long term.



## Service Offerings

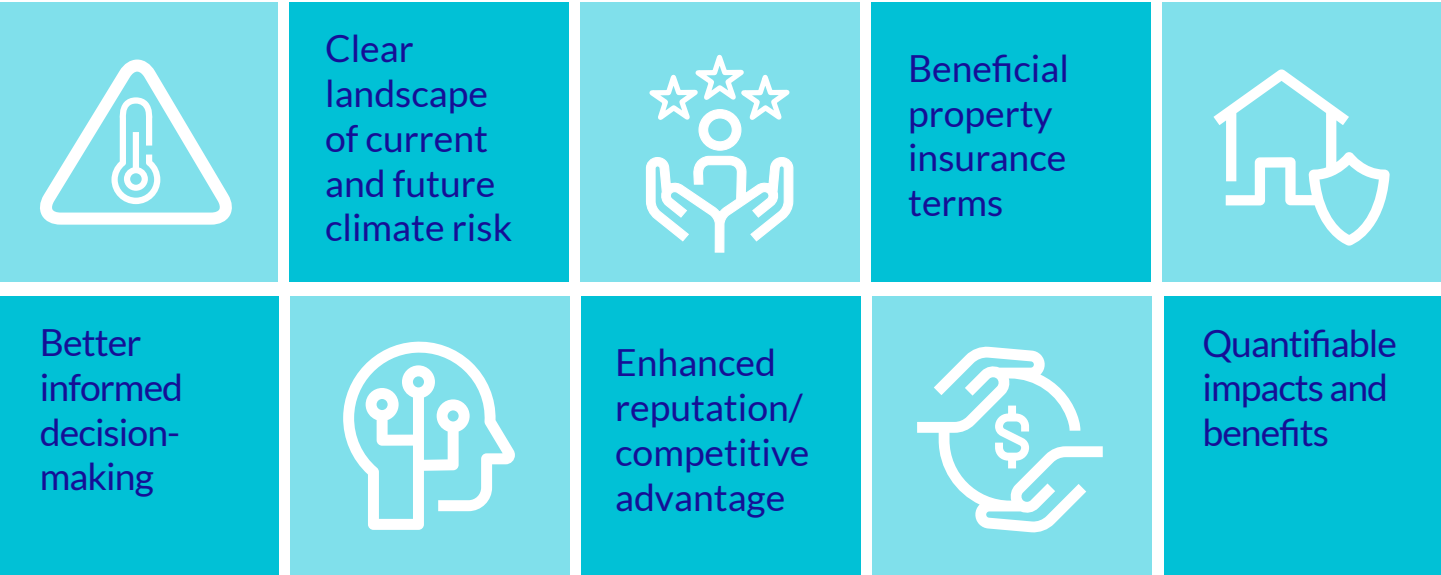
We tailor our services to prepare for all the 'what ifs'

<b>Risk Prioritization</b>	Defining the highest risk areas across your portfolio
<b>Risk Assessments</b>	In depth analysis of each property's vulnerability
<b>Climate Modeling</b>	Current and forward-looking modeling to access how risk evolves over defined timescales
<b>Risk Quantification</b>	Calculating the loss of value if an event occurs
<b>Resilience Planning</b>	Planning level estimates and detailed engineering-based recommendations to mitigate risk
<b>Benefits Quantification</b>	Clarifying your return on investment in property resilience

## Benefits

### Chubb's Climate Risk & Resilience Services

There is no one-size-fits-all when it comes to climate risk and resilience. We tailor our services to each clients individual priorities and challenges. Our analysis combines historical events, losses and claims data with advanced site engineering assessments and forward looking climate models, and finally quantifies the financial impact of losses and mitigation measures to empower businesses in their decision-making.



# Selected Case Studies



## Supporting a community in its wildfire mitigation efforts

A community with a major wildfire risk required an assessment of existing protective measures and recommendations to enhance resilience and response capabilities.

### Goal

Equip the community with tools and knowledge to improve their resilience against disasters.

### What we did

A focused combination of risk assessment, engineering expertise and strategic guidance, leading to practical solutions.

### Impact

Improving safety of homeowners and fostering a culture of preparedness in the community.



## Commercial building project under climate threat

A building housing 1500 people faced hurricane, flood, rising sea level and heatwave Philadelphia risk, threatening its financial and operational stability.

### Goal

Deliver effective resilience measures to protect the building from extreme natural weather events.

### What we did

A thorough assessment led to elevating and strengthening the building design, including back up failsafe systems, alternative energy sources and IOT sensors.

### Impact

A robust design safeguarding the property against future climate events alongside a reduction of potential loss costs of 25 x investment.



## Solar development in flood-prone area

A solar power developer needed to address serious flood risks to allow informed decision-making, insurance discussions and a long-term strategy.

### Goal

Understand vulnerabilities and mitigate flood risk to allow successful solar power development.

### What we did

A comprehensive historical, current and future scenario planning of flood risk, leading to engineering and design recommendations to address vulnerabilities.

### Impact

Engineering solutions alongside advisory work for insurance partners to strengthen loss prevention, enabling robust risk management strategies.

## For more information, please contact

Please contact the Chubb Resilience Services team:



**Amelie Fava-Verde**  
SVP Resilience Services Leader  
424.410.1061  
amelie.fava-verde@chubb.com



**Jason Ballentine**  
VP Resilience Services Lead  
512.659.8185  
jason.ballentine@chubb.com