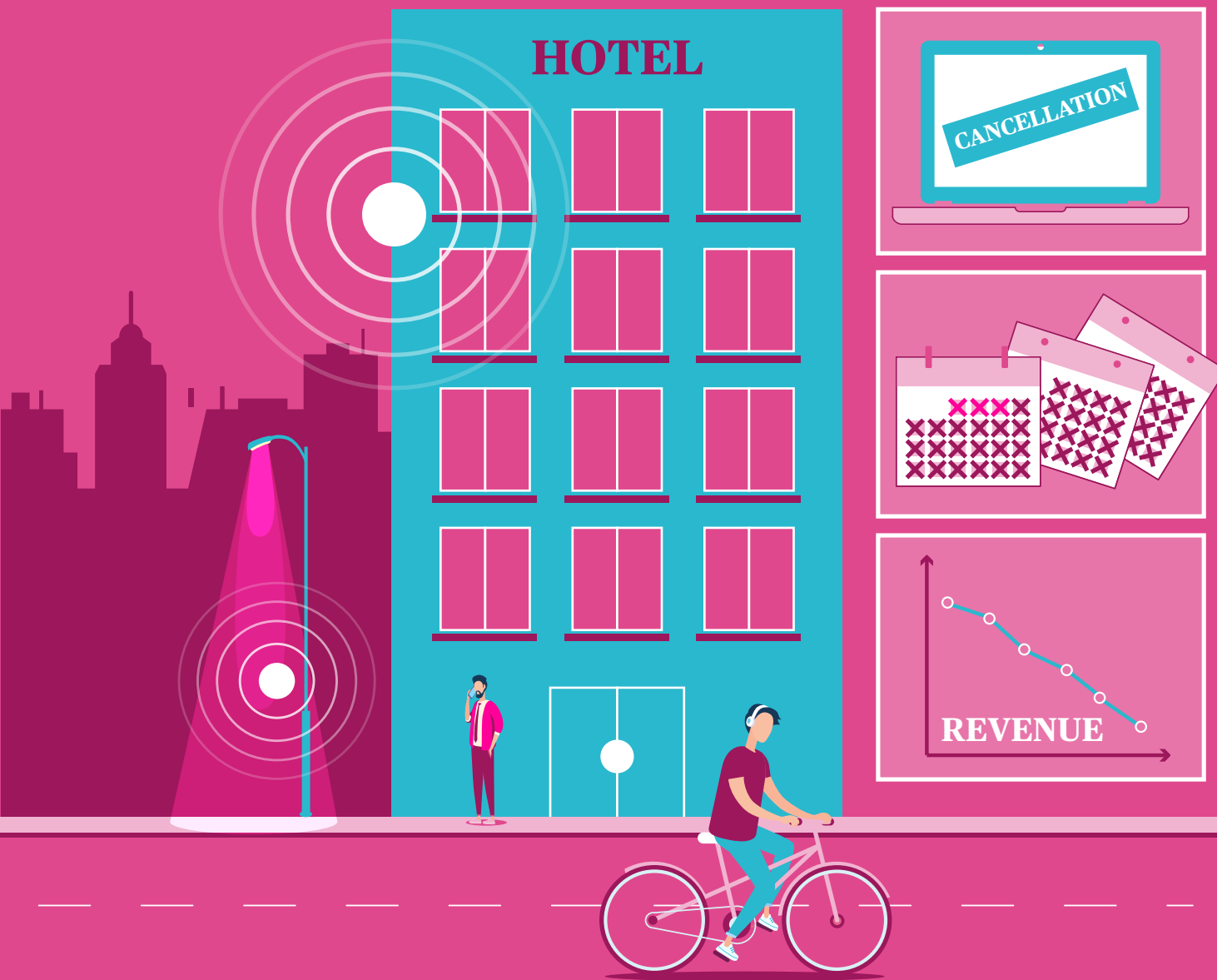


LOSS OF ATTRACTION



An event occurs within the **vicinity of a hotel**

They **do not suffer any physical damage** but incur a series of cancellations due to a higher threat level

This continues for **3 months**

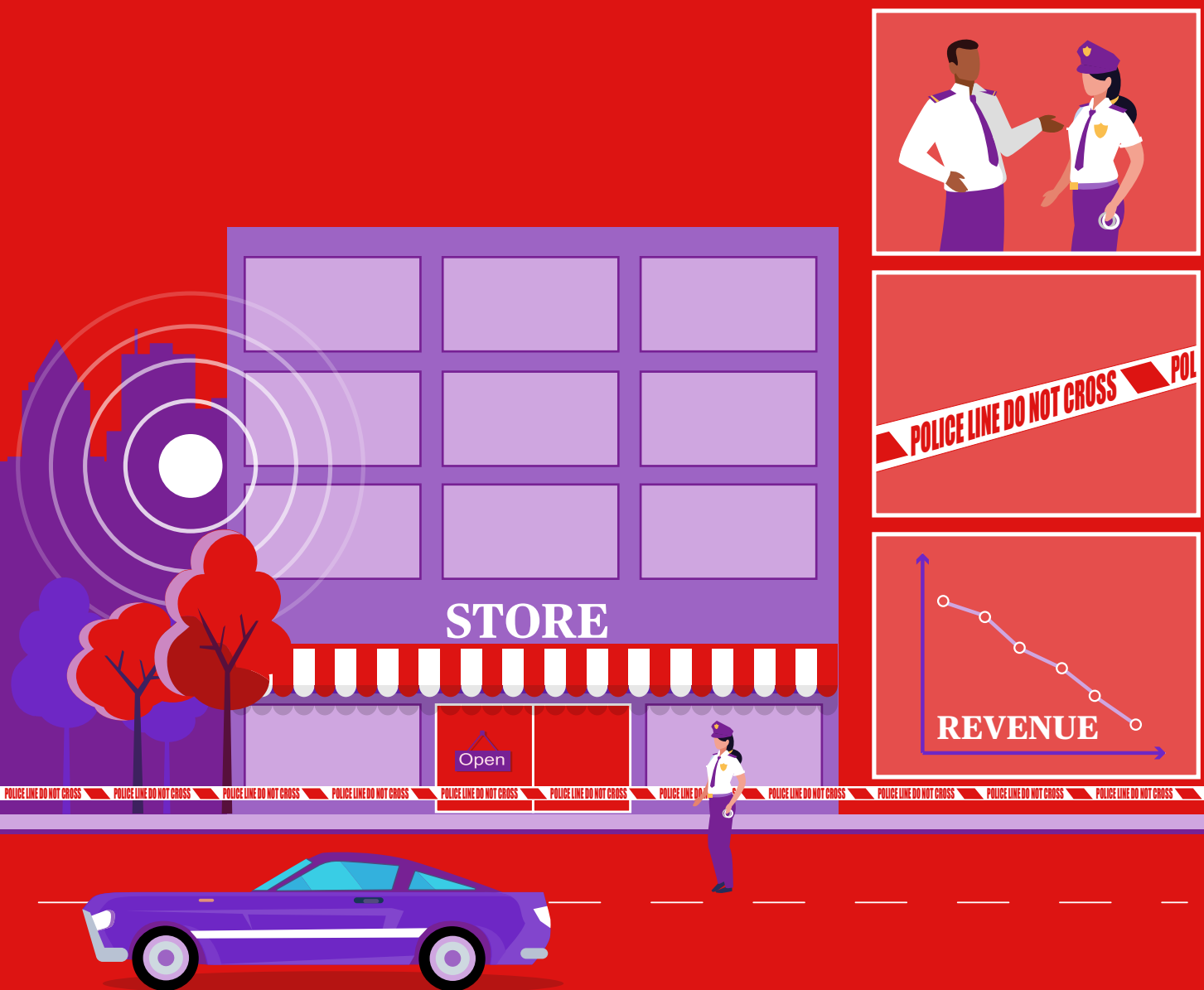
As a result the hotel operator suffers a **loss of revenue**

Under a traditional Terrorism policy **the hotel would not be eligible to claim.**

Non Damage Terrorism Solutions is different. **Find out why**

CHUBB®

THREAT



A terrorist incident occurs in a **city centre**

There is **no major physical damage** but the city is locked down by police due to a high threat level

They set up a **one mile cordoned area** with restricted access

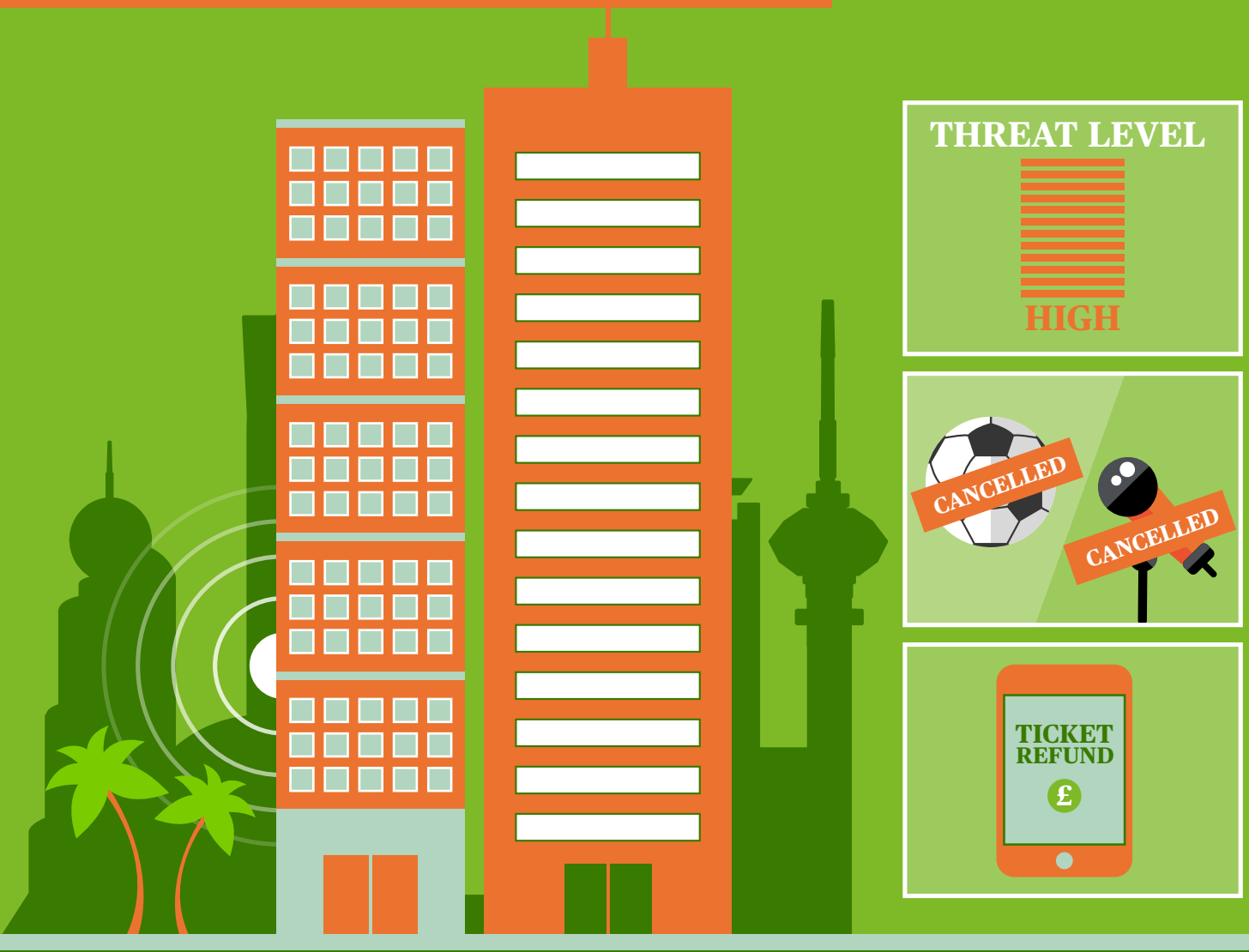
A city centre supermarket incurs a **fall in revenue** as a result of a reduced customer foot fall

Under a traditional Terrorism policy the **supermarket would not be eligible to claim.**

Non Damage Terrorism Solutions is different. **Find out why**

CHUBB®

EVENT CANCELLATION



There is a regional escalation within the Middle East increasing the **threat of War**.

A number of **events in the city are cancelled** including concerts and football matches following recommendation by local government authority.

Event organisers are unable to reschedule and are forced to **refund tickets due to the safety concerns**.

Under a traditional Terrorism policy the event **organisers would not be eligible to claim**.

Non Damage Terrorism Solutions is different. **Find out why**

CHUBB®

EMPLOYEE AND CUSTOMER CARE



Multiple lone-wolf terrorist attacks occur on the streets of a city

One attack occurs in the vicinity of a real estate companies head office

A security staff member was outside talking to a customer and both have been seriously injured

Under Non Damage Terrorism Solutions employee and customer care cover kicks in

This enables the company to quickly and confidently manage the crisis and reduce reputational risk

Non Damage Terrorism Solutions is different. Find out why

CHUBB®

INTERRUPTED BUSINESS



The client is a **multinational hospitality business** with numerous properties up and down the country.

A terrorism event occurs within the **vicinity of an insured location**.

There is no property damage to the insured but Non Damage Terrorism Solutions will provide business **interruption cover** as a result of **reduced turnover** following a large number of customer cancellations due to a higher perceived threat level.

Non Damage Terrorism Solutions is different. **Find out why**

CHUBB®