

Business Travel Claims Case Studies

Case Study 1

CLAIM COST:
\$30,000

POLICY BENEFITS:
✓ Overseas Medical Expenses
and repatriation



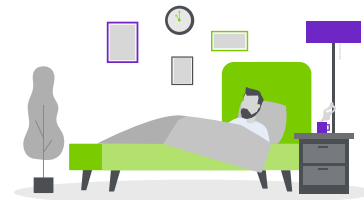
1. The Event

We received a call from the client at our 24/7 emergency assistance centre. Our client, who was usually based in the UK, was travelling in the US and had developed a high fever and flu-like symptoms.



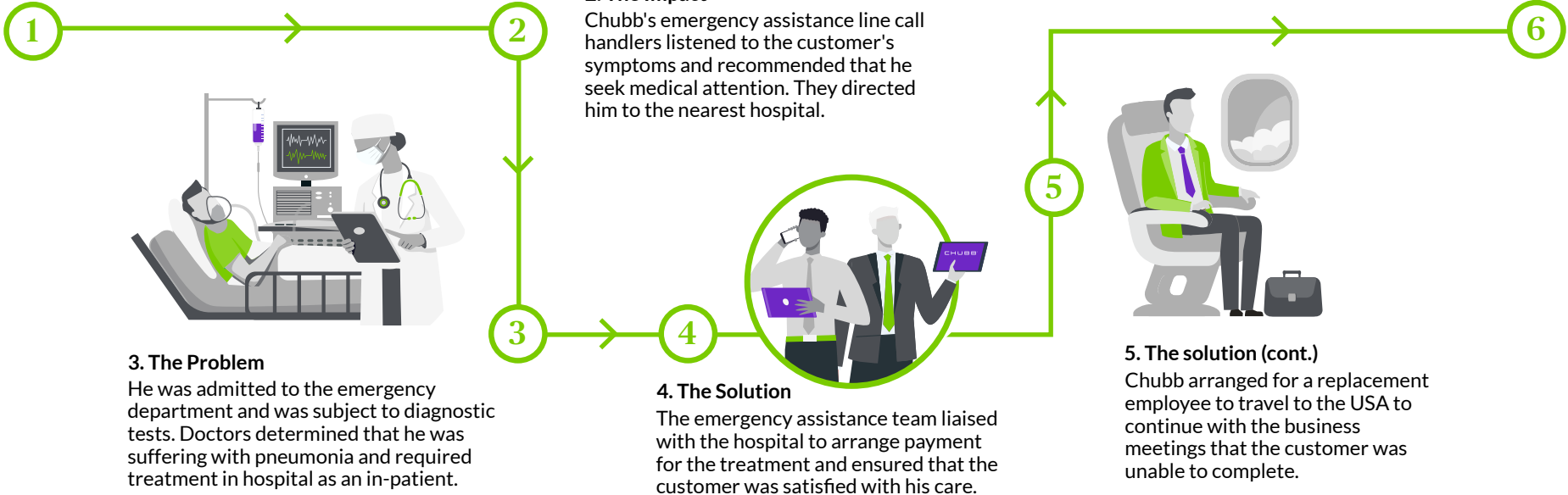
2. The Impact

Chubb's emergency assistance line call handlers listened to the customer's symptoms and recommended that he seek medical attention. They directed him to the nearest hospital.



6. The Outcome

After a week-long stay in the hospital, he was discharged. The emergency assistance team arranged a hotel room for him to continue his recovery until he was fit enough to fly home.



Chubb European Group SE, Swedish Branch, is registered in the company register with the corporate registration number 516403-5601 and the visiting address Birger Jarlsgatan 43, 111 45 Stockholm. Chubb European Group SE is an undertaking governed by the provisions of the French insurance code with registration number 450 327 374 RCS Nanterre and the following registered office: La Tour Carpe Diem, 31 Place des Corolles, Esplanade Nord, 92400 Courbevoie, France. Chubb European Group SE has fully paid share capital of €896,176,662 and is supervised by the Autorité de contrôle prudentiel et de résolution (ACPR) 4, Place de Budapest, CS 92459, 75436 PARIS CEDEX 09. The branch's operations are also subject to supervision by the Swedish FSA (Finansinspektionen).

Chubb European Group SE is a subsidiary of a US parent and Chubb Limited, a NYSE listed company. Consequently, Chubb European Group SE is subject to certain US laws and regulations, in addition to EU, UN and national sanctions restrictions, which may prohibit it from providing cover or paying claims to certain individuals or entities or insuring certain types of activities related to certain countries such as Iran, Syria, North Korea, North Sudan and Crimea.