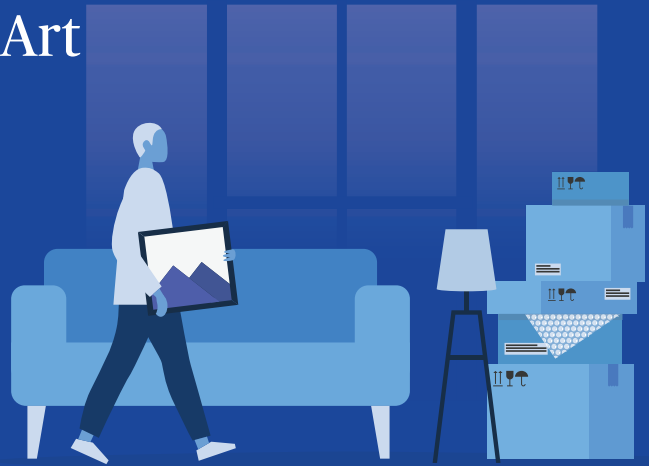


# How to Protect Your Fine Art



## Keep it in one piece

- Hire professional art installers to hang works of art on the wall.
- Use museum-quality hardware that's appropriate for the size and weight of the item.
- Avoid installing items in high traffic areas of the home.
- Explain the importance of the artwork to domestic staff and provide specific instructions for how to work around the objects.



*More fine art items are damaged in transit and due to accidental breakage than any other source of loss.*

## Transport it carefully

- Hire only reputable companies that specialize in transporting valuable works.
- Have a professional inspect artwork and complete a condition report prior to packing.
- Crate and pack with specialized materials. High value items should be moved in a museum quality crate.
- Transport vehicles should have air ride systems to reduce the risk of damage from shocks, vibrations, or sudden stops.
- Trucks or vans should be temperature and humidity controlled.
- Vehicles should have a security system and be staffed with two drivers, so art is never left unattended.
- Make sure you have an inventory and proper documentation for all items before transporting.

## Keep it dry

- Avoid displaying artwork underneath a bathroom, HVAC vent, sprinkler head, or water-using appliance.
- Don't keep artwork in the basement, due to risk of floods.
- Install a system that automatically detects leaks and shuts off the water supply to minimize damage.

## Get the right insurance

Insurance companies that specialize in protecting fine art can help you care for your collection, decide if your home, office, or off site storage location is suitable, and can provide guidance and advice about transport, storage and display conditions, fire protection, and security. Additionally, they have a strong network of service providers that can help you avoid and recover from loss.



## Want to learn more?

Contact your agent or broker or visit [www.chubb.com/us-arts](http://www.chubb.com/us-arts)



Chubb. Insured.™